

Multimedia

Record Function



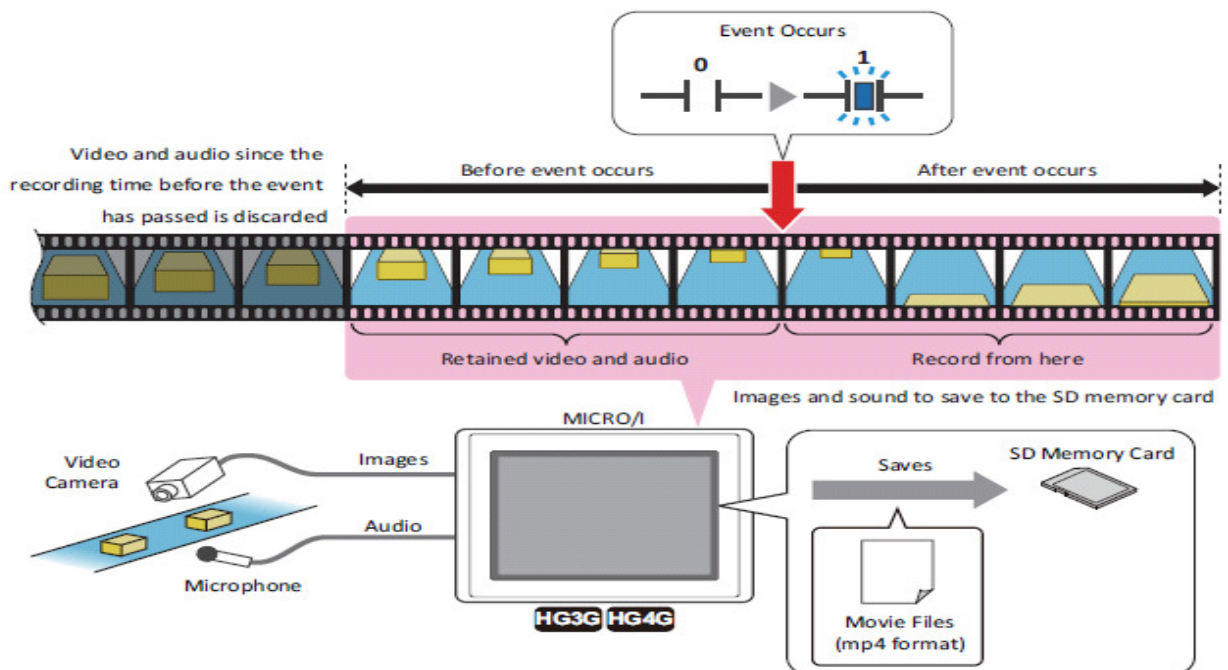
Contents:

Overview	Page 3
How to Configure a Record and Stop Button	Page 4
How to Configure a Record/Stop function using Multi Command / Button.....	Page 8
How to Configure for Event Recording	Page 10
How to Play a Recorded file	Page 12

OVERVIEW

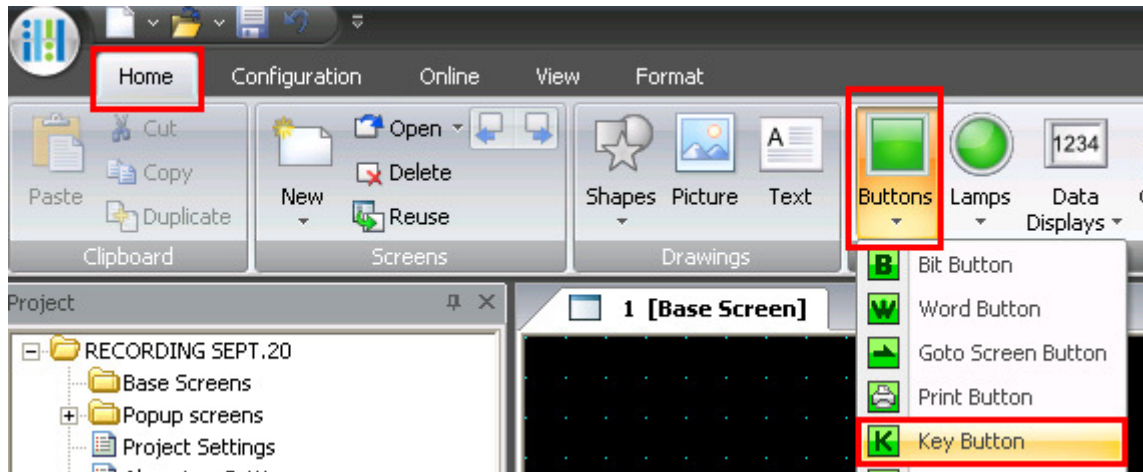
Record video images and audio using either of the following method:

- **Use a REC (Record) Button / Command**
 - Maximum recording time is 30 seconds
 - No settings / configuration required in WindOI-NV2 software.
 - Simply create a REC / Stop button or command to trigger the recording process.
- **Use Event Recording**
 - Event Recording can be triggered on any screen (it acts globally).
 - Settings are required for Event Recording
 - Maximum recording time is 30 seconds
 - Record 15 seconds max. before the event occurred and 15 max after the event occurred (when assigned bit changes from off to on status). Review image below.

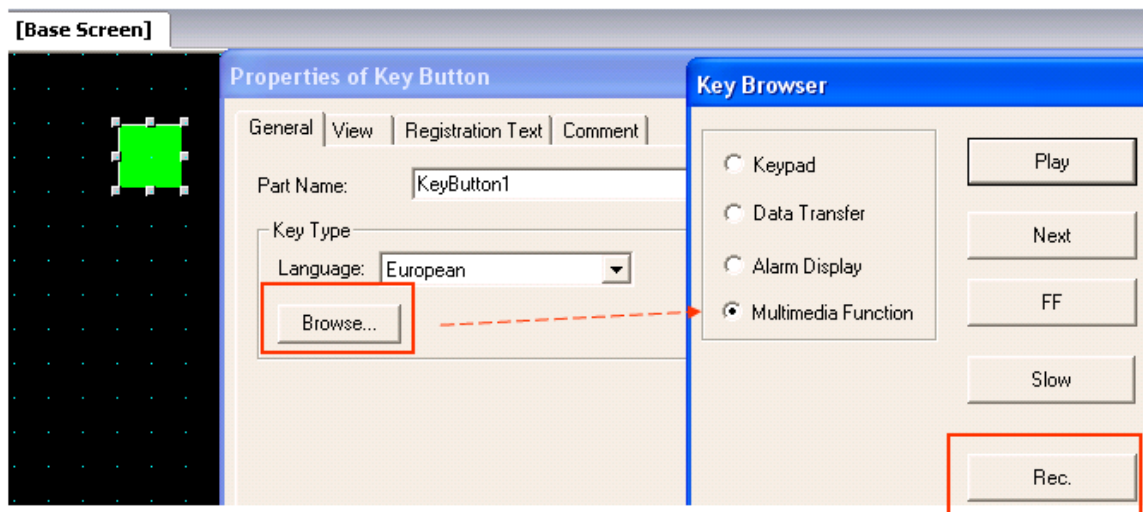


How to Configure a REC (Record) and Stop Button.

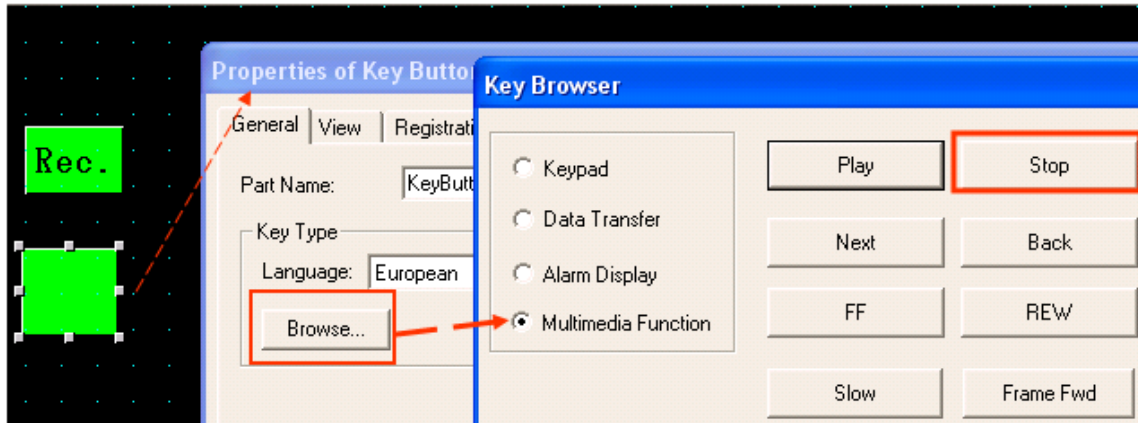
1. Go to **Home** tab, select **Buttons** and then **Key Button** (drop it on the base screen). Double click to configure the properties of the Key Button.



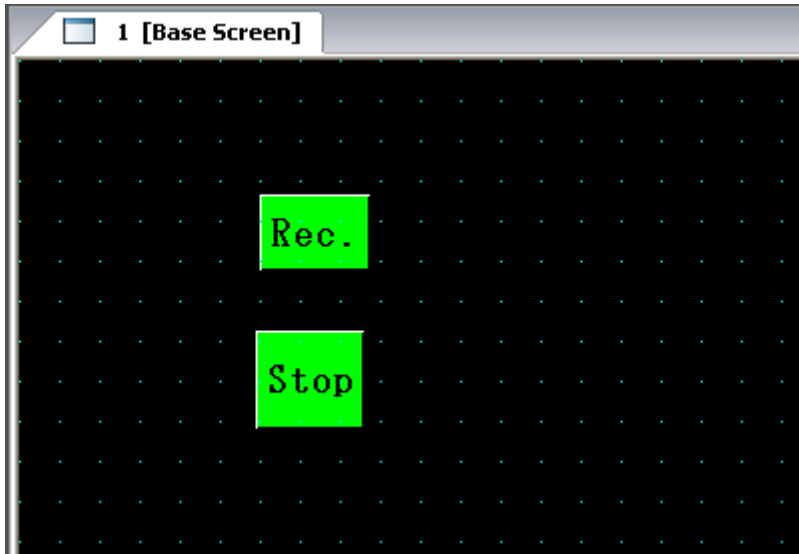
2. In the **Properties of Key Button**, click the **Browse** button. Select **Multimedia Function** and then the **Rec** button. Click the OK button to close the properties of the key button.



3. To create a **Stop** button, first follow step 1 (above). In the **Properties of Key Button**, click on **Browse**. Select **Multimedia Function** and then select the **Stop** button.



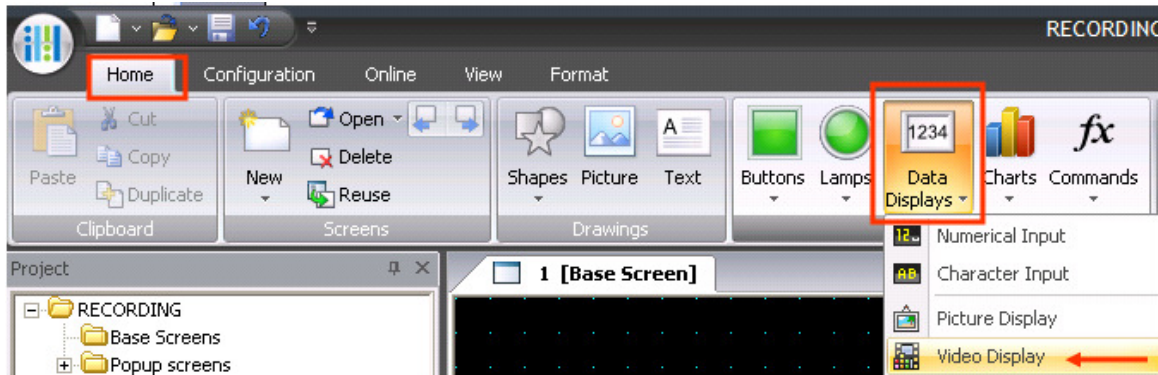
4. At this point, the configuration is done. You may download this program. To trigger the Rec and Stop button, you must go to that base screen where you had placed the buttons at and trigger them.



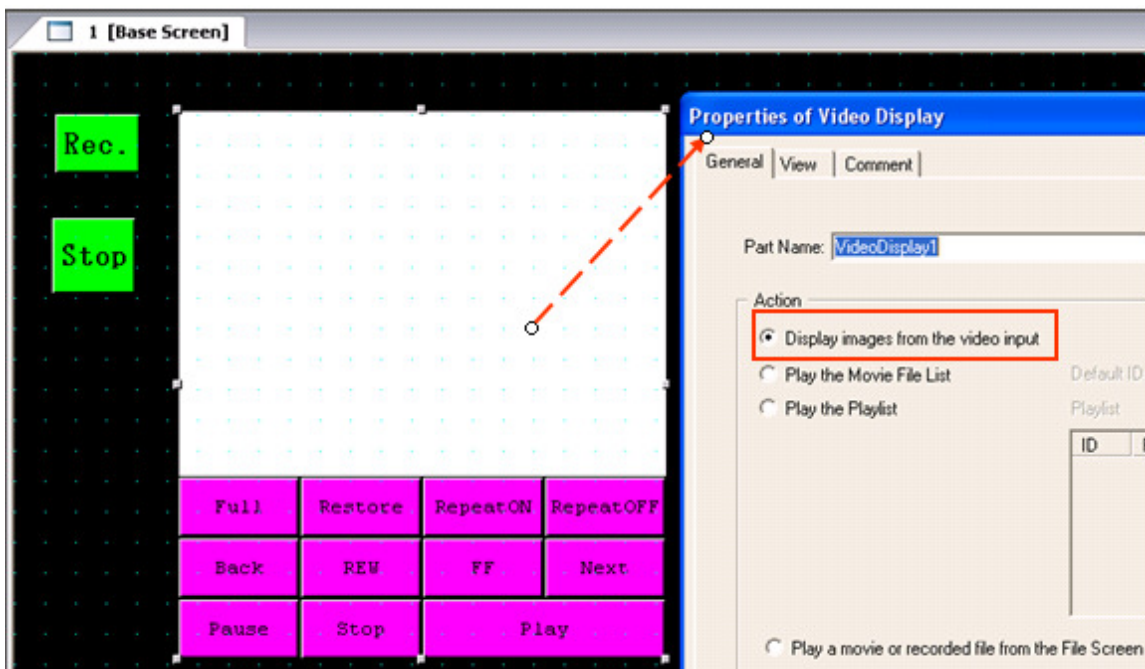
Optional only:

5. To place a video monitor display on the same screen with Rec and Stop button. Here is a way to configure the video display to be in monitor only.

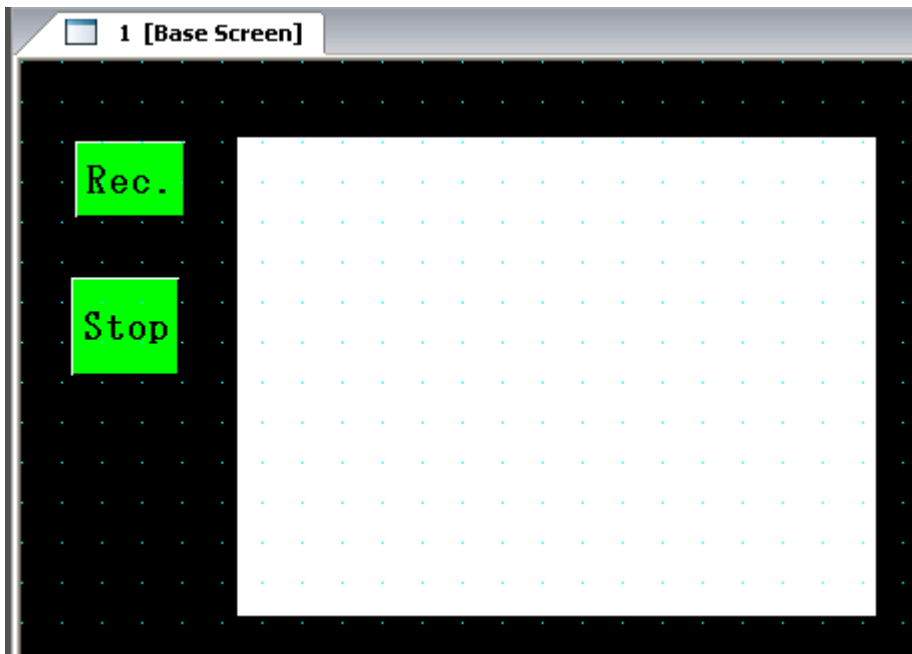
Go to **Home** tab, select **Data Displays** and then **Video Display** (drop it on the base screen and double click to configure the properties).



6. In the **Properties of Video Display**, select “**Display images from the video input**” under Action mode.

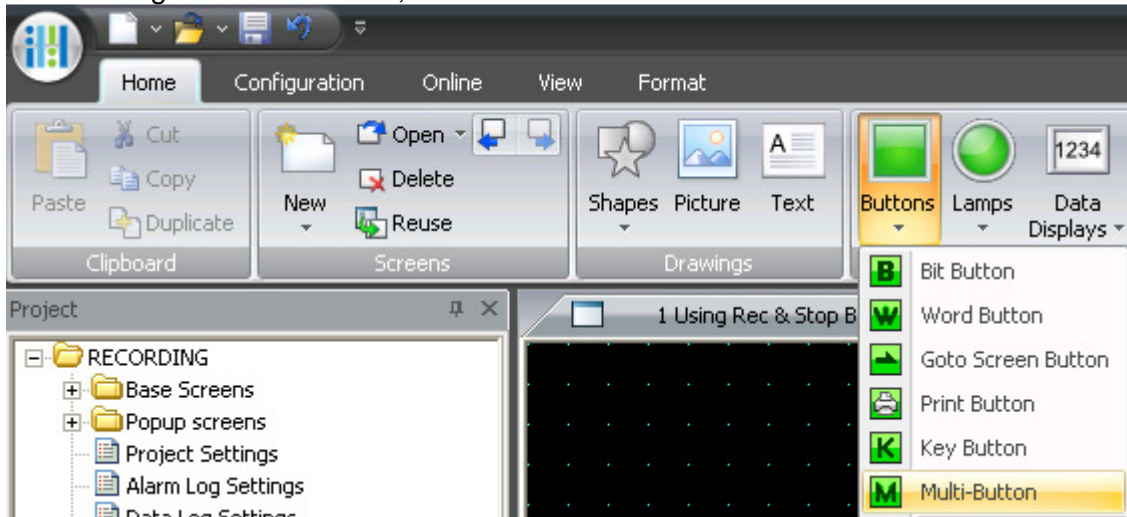


7. You may remove the buttons below the display since they will not be needed in the video monitor display. To delete the buttons, do a right mouse click on the display, select Ungroup, delete the buttons. The end result is shown below.

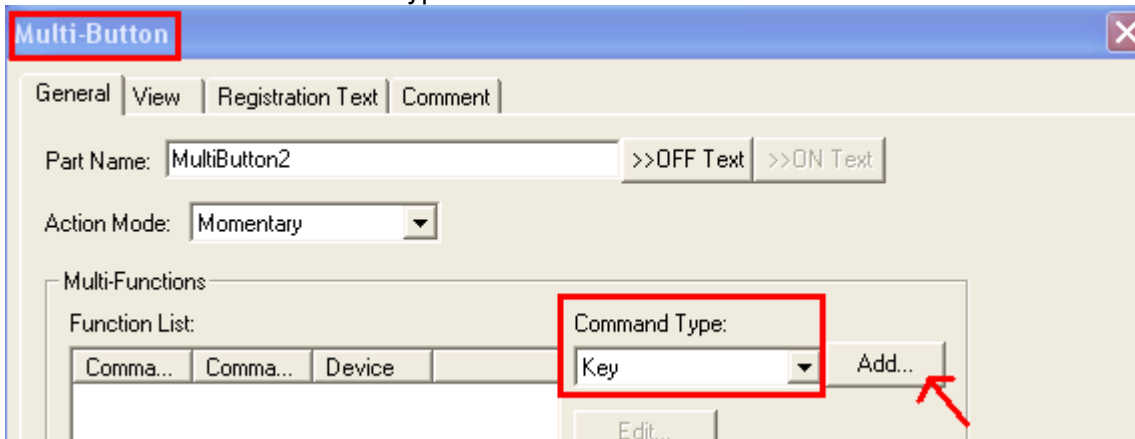


How to Configure Record and Stop button using the Multi- Button or Multi - Command function.

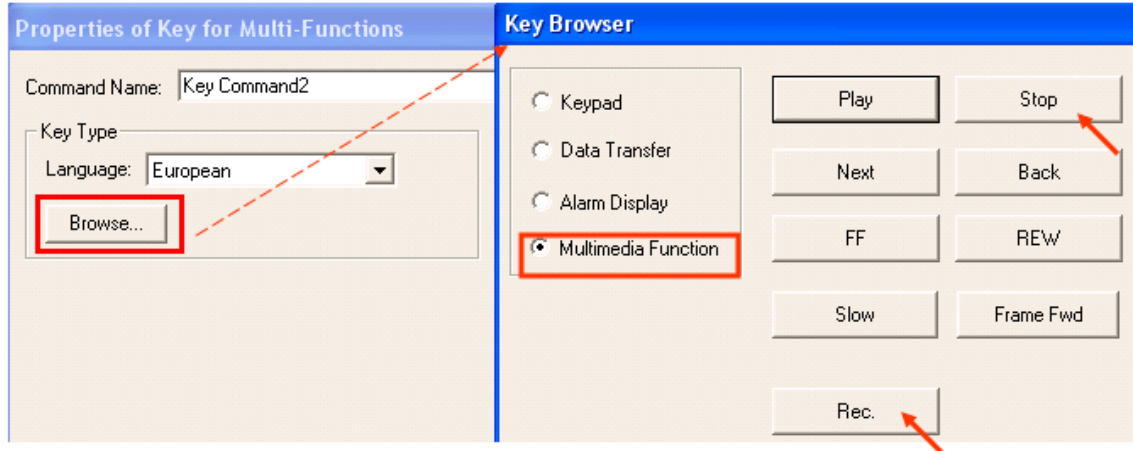
1. To configure a Multi Button, select **Home** tab – **Buttons** – **Multi Button**



In Multi Button Properties, select the **Action Mode** and select **Command Type: Key**. Click **Add** button to select the type of button.

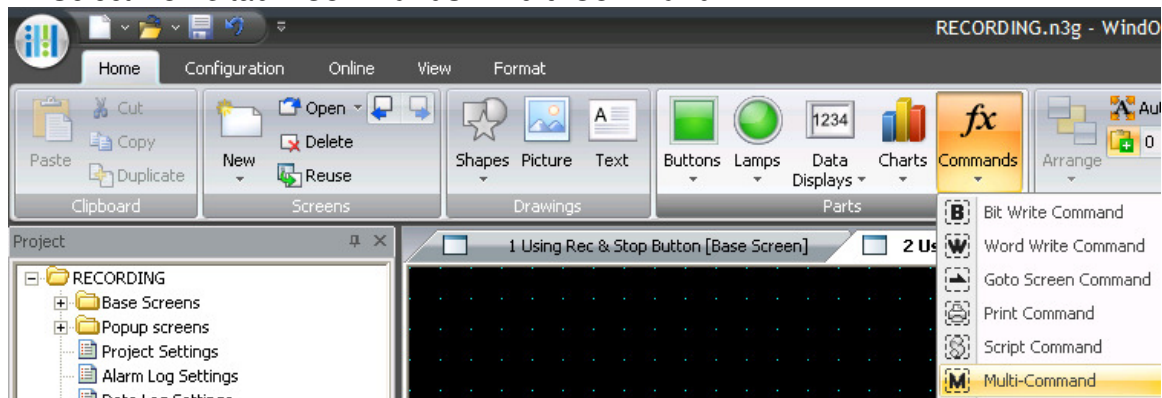


Click the **Browse** button. In **Key Browser**, select **Multimedia Function**. Select **Rec** or **Stop** button.

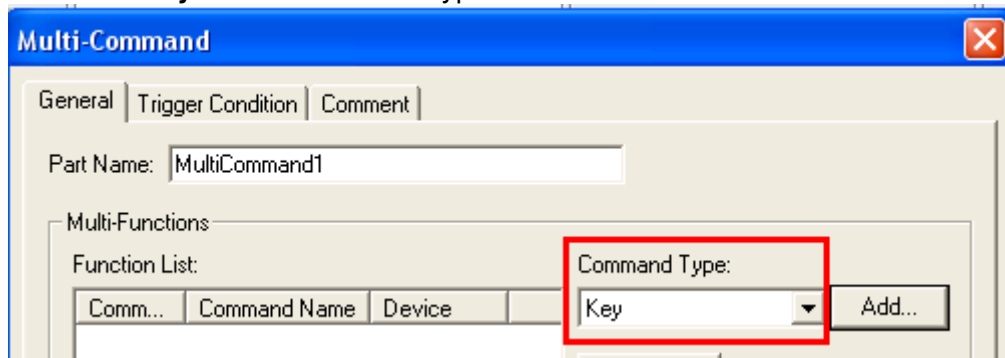


OR

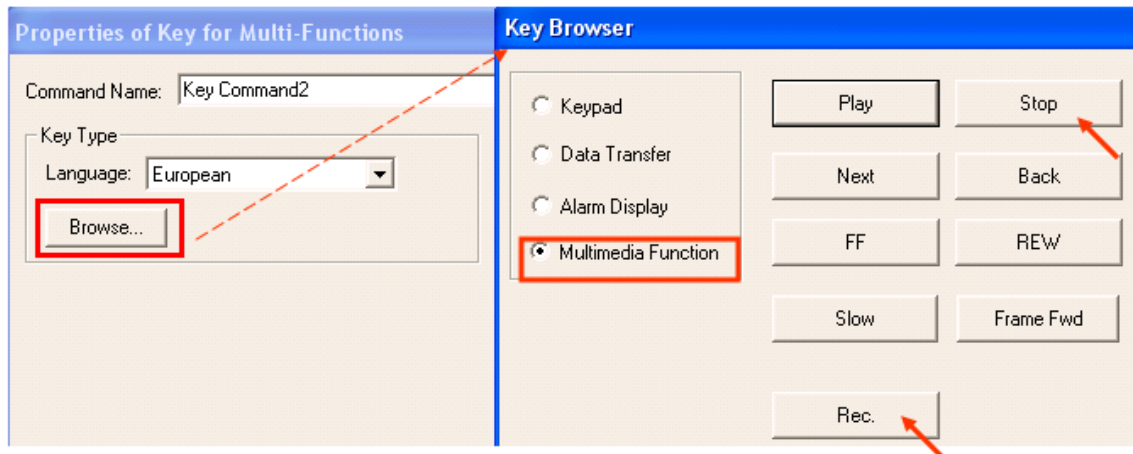
1. Select **Home** tab – **Commands** – **Multi Command**



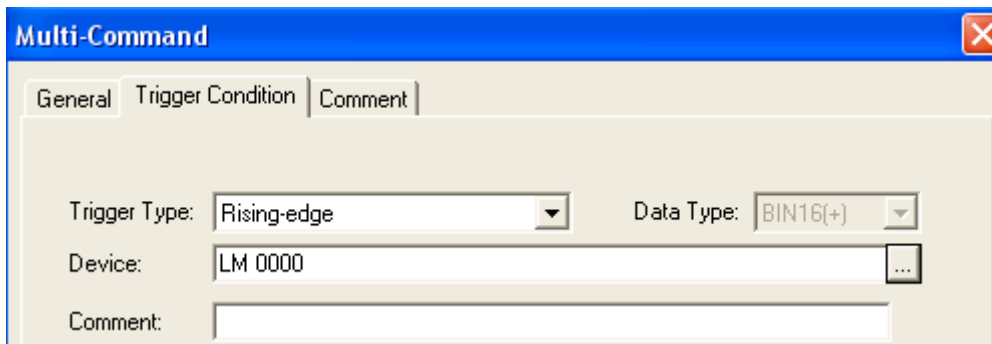
2. Select **Key** as the Command type. Click the **Add** button.



Click the **Browse** button. In **Key Browser**, select **Multimedia Function**. Select **Rec** or **Stop** button.

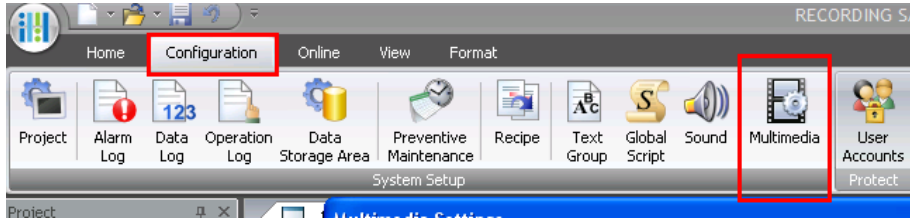


Lastly, assign a **Trigger Condition** (enter the device type) to trigger either Record or Stop function.



How to Configure for Event Recording:

1. Go to **Configuration** tab – select **Multimedia**



2. In Multimedia Settings, select **Record** tab. Next, follow the steps below.

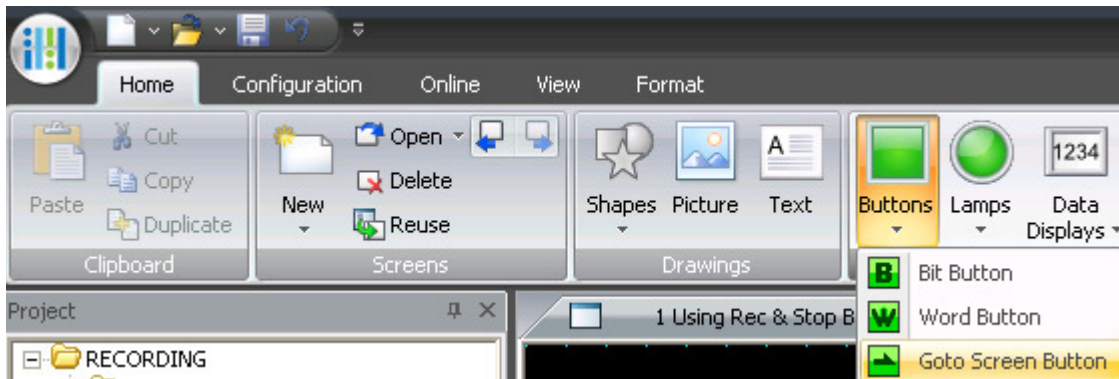
A screenshot of the 'Multimedia Settings' dialog box. The 'Record' tab is selected and highlighted with a red box. The dialog contains several settings: a checked 'Use Event Recording' checkbox, a 'Recording Target' section with 'Video and Audio' selected, a 'Trigger Device' field with 'LM 0000' entered, and two spinners for 'Recording Time Before Event(sec)' and 'Recording Time After Event(sec)', both set to 15. Red arrows point from text annotations to these specific settings. The annotations include: '1. Check the check box to enable "Event Recording"', '2. Select if you want to record Video & Audio or Video only.', '3. Assign a trigger bit address to start the recording process', and '4. Assign time for before and after Event occurred to be recorded. - Maximum recording time is 30 seconds. - 15 secs max to record before the event occurred and 15 secs max after the event occurred'.

Click the **OK** button when all settings are done.

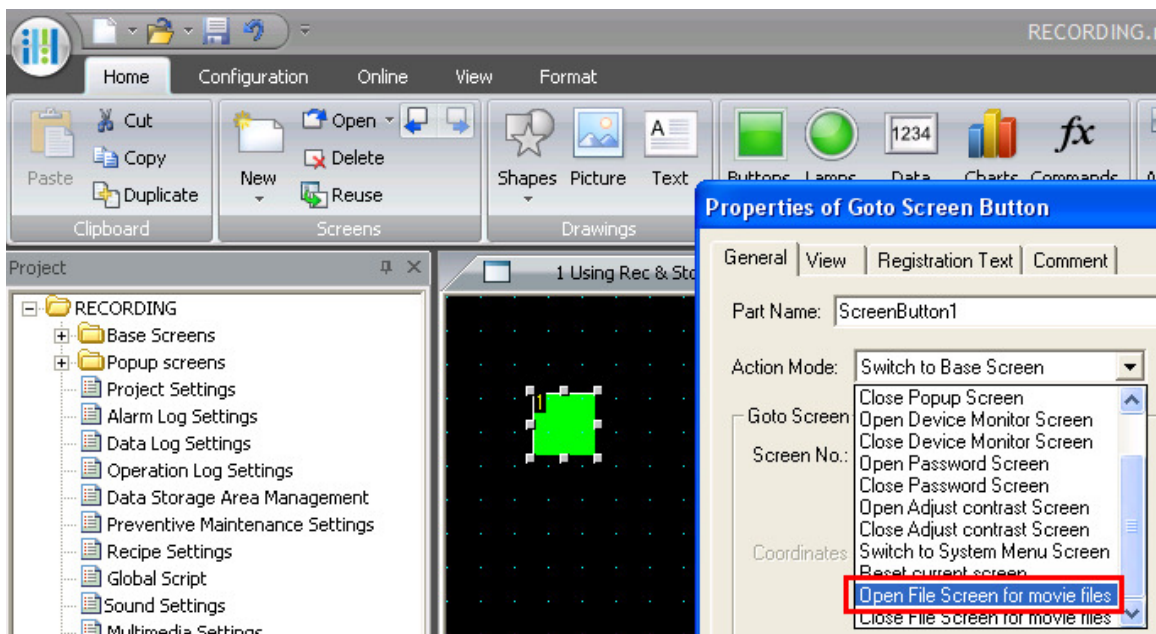
3. You may now download the project.
In the example above, address LM 0, is the assigned trigger device. Thus, if you trigger LM0 (i.e. system fault occurred) on any screen, it will immediately start recording. It will record 15 seconds of event before and 15 seconds of event after the bit is triggered.

How to Play a Recorded File

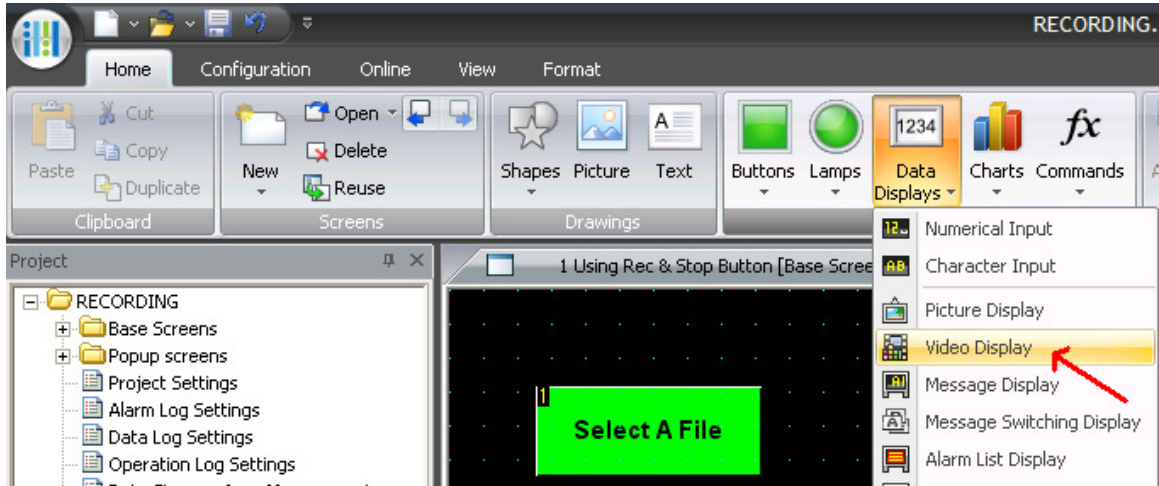
1. Create a new base screen. Next, select **Home** tab – **Buttons** – **Goto Screen Button**.



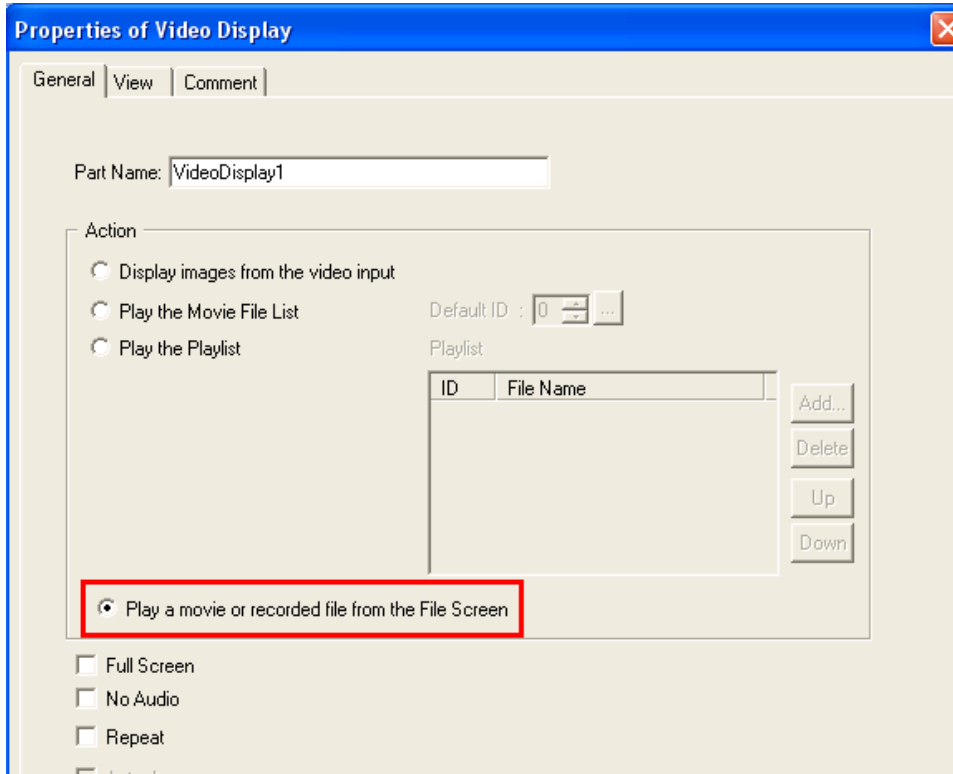
2. In **Properties of Goto Screen Button**, select “**Open File Screen for movie files**”. In this example, the button will be labeled as “Select A file”.



3. Go to **Home** tab , select **Data Display** and select **Video Display**.



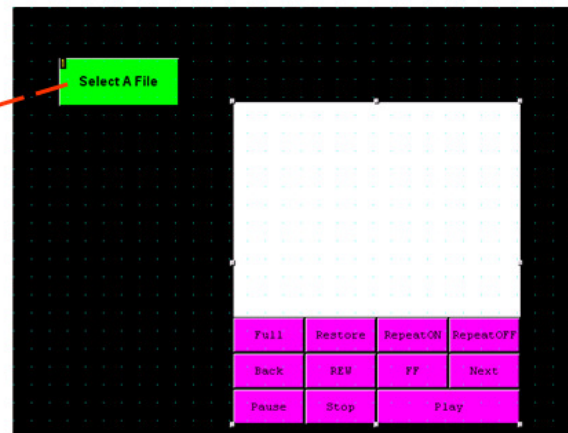
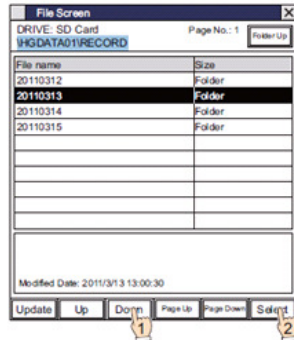
4. In the Properties of Video Display, select “Play a movie or recorded file from File Screen”



Click the **Ok** button to close the properties.

4. Here is the final display on the screen. You may now download this project. Click the “Select A File” button to select the recorded file to be played on the Video Display.

Select the folder with the date of the recorded images.
Press Down to select 20110313 and then press Select.
The contents of the “20110313” folder will be displayed.



- **Limitations when using Event Recording:**
 - When doing an event recording, you must wait till the event recording is saved in the SD card, then REC Button can be used or play a movie file.
 - To monitor the event recording status bit, use LSD 155-0
 - If bit LSD155-0 is ON, keep in mind you can not play a movie file or press the REC button.
 - If bit LSD155-0 is OFF, then you can play a movie file or press the REC button.