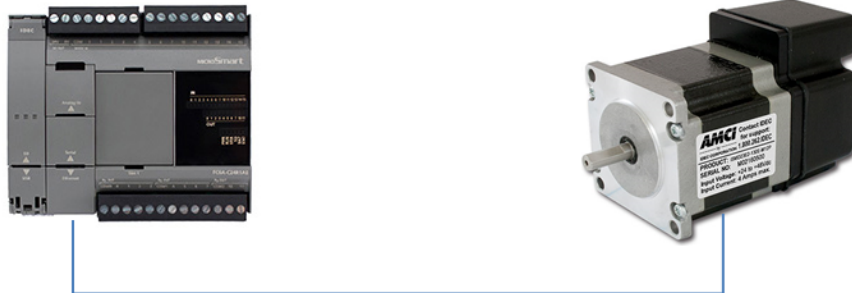


Application Notes

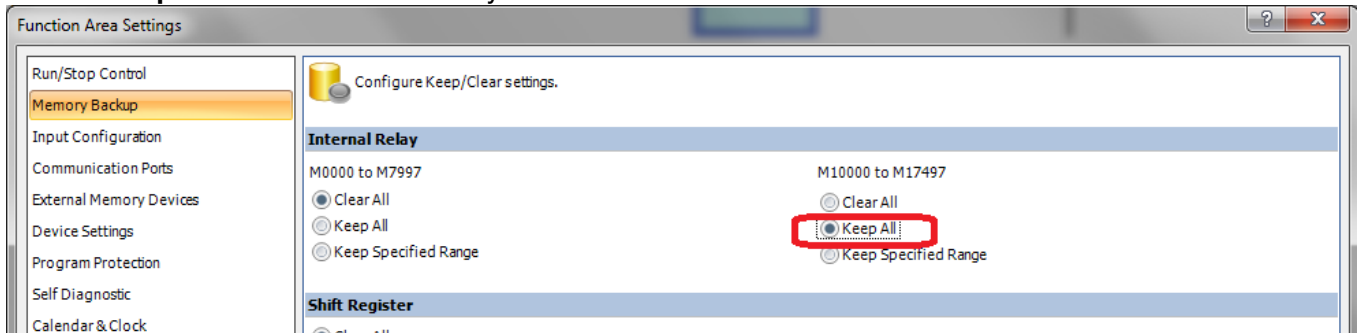
How to configure AMCI ISMD23E2 Motor+Drive+Controller

Follow the instructions below to configure and execute a relative move command with the MicroSmart FC6A PLC and AMCI Motor+Drive+Controller unit.

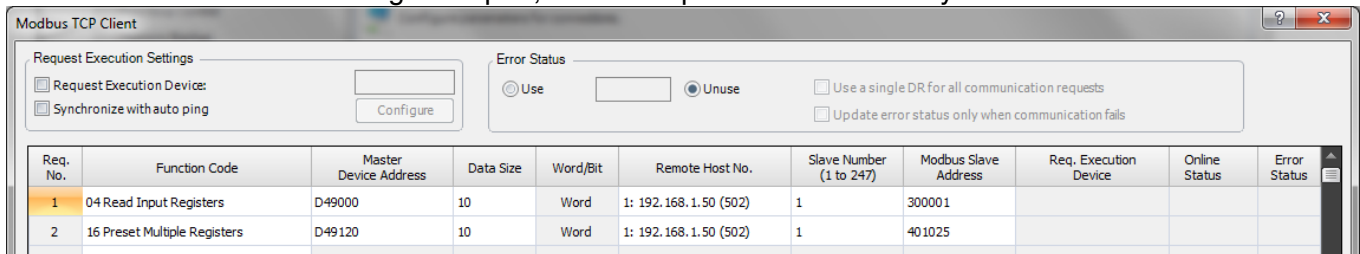


M12-RJ45 Ethernet cable
(part number ICNER-5M)

1. Click on this link to download and save the user-defined macro instructions <http://us.idec.com/Common/Download.aspx?d=414271>
2. In WindLDR software (make sure FC6A PLC is selected), click **Configuration** tab → **Memory Backup**, select “**Keep All**” under Internal Relay M10000 to M17497

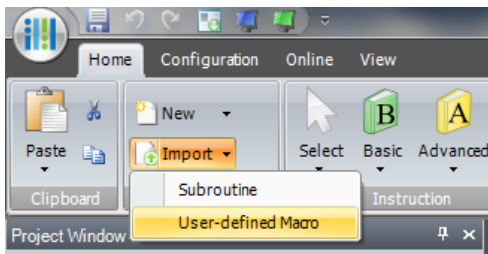


3. In WindLDR software (make sure PLC IP address is default to 192.168.1.5), click **Configuration** tab → **Connection Settings**
4. Under Connections 1, select **Modbus TCP Client**
5. The Modbus TCP Client dialog box open, fill out Req. No. 1 and 2 exactly as shown below

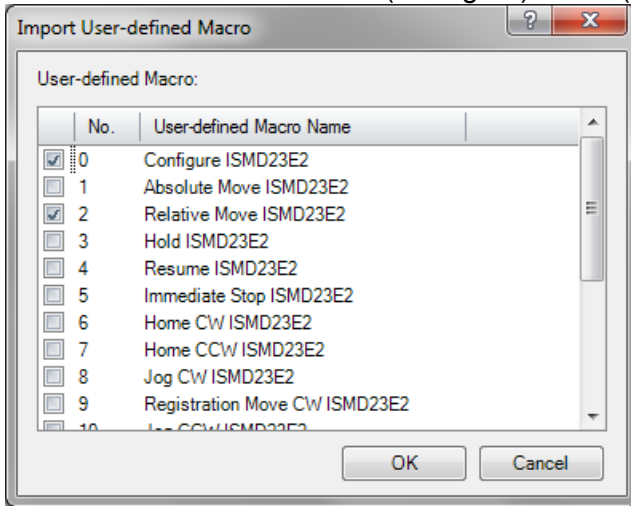


Note: Assuming the AMCI unit IP address is default at 192.168.1.50

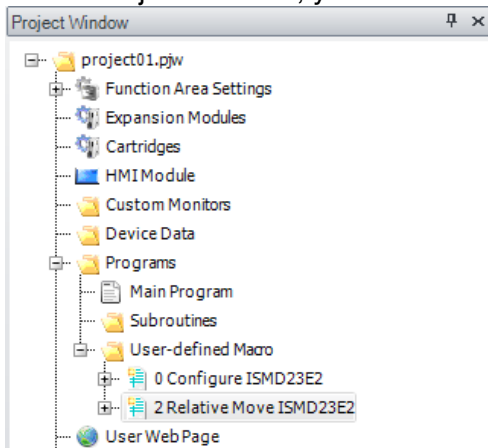
6. Under **Home** tab, click **Import** and select **User-defined Macro**



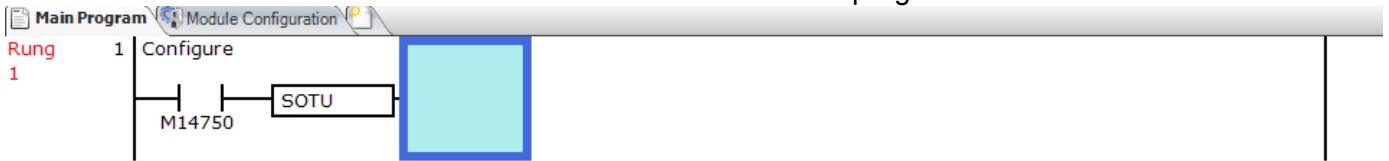
7. Locate the file save in step 1 and click **Open**
8. Select **User-defined Macro 0** (Configure) and **2** (Relative Move) and click **OK**



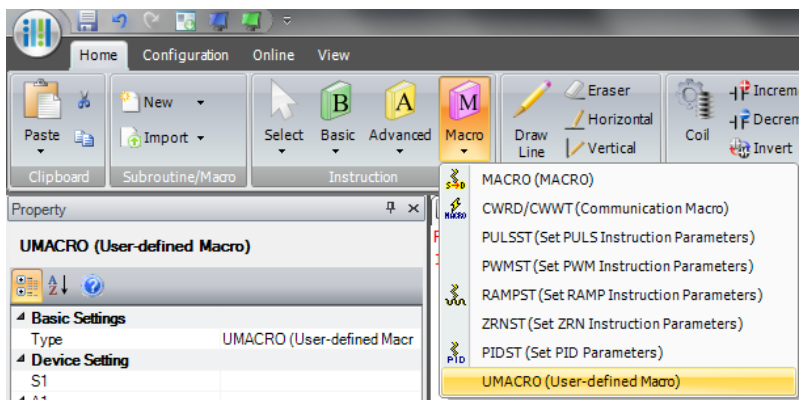
9. Under Project Window, you should see macro 0 and 2 under User-defined Macro



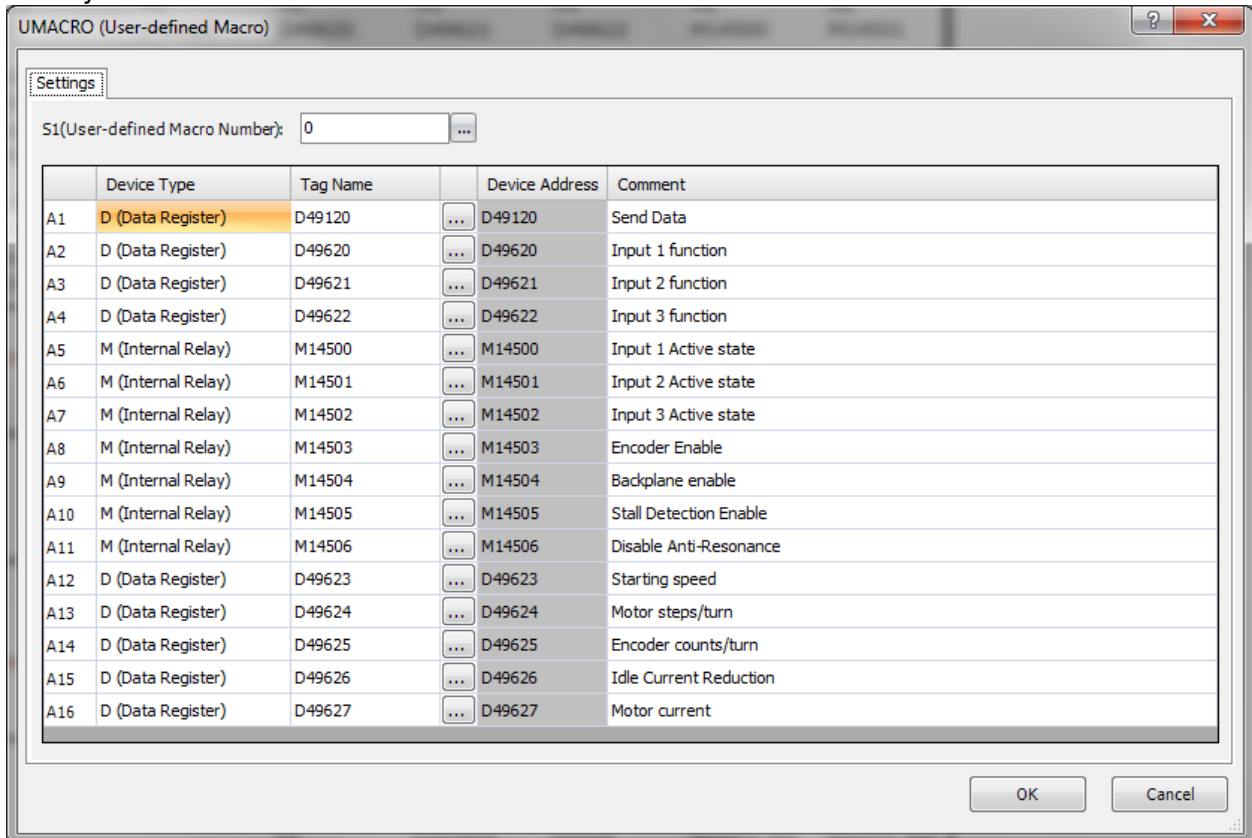
10. Insert a NO contact M14750 and SOTU instructions in the ladder program as shown below



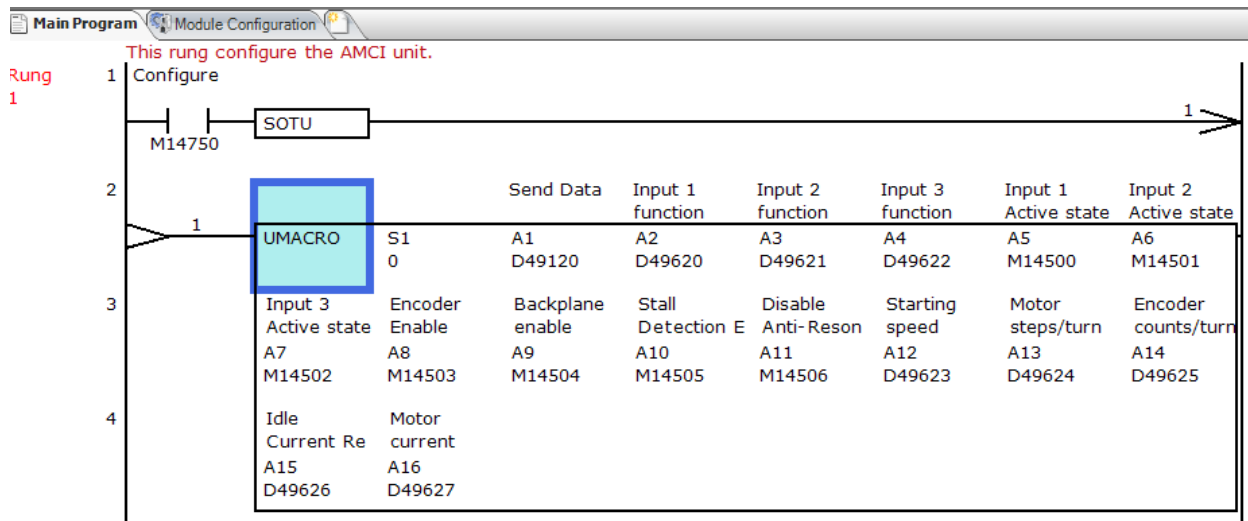
11. Under **Home** tab, click **Macro** and select **UMACRO**



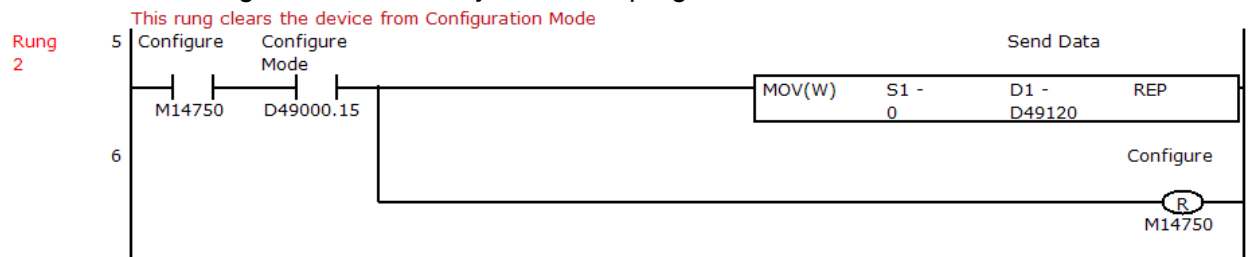
12. Under S1(User-defined Macro Number), make sure it's default to 0 (macro 0). Fill out the parameters exactly as shown below



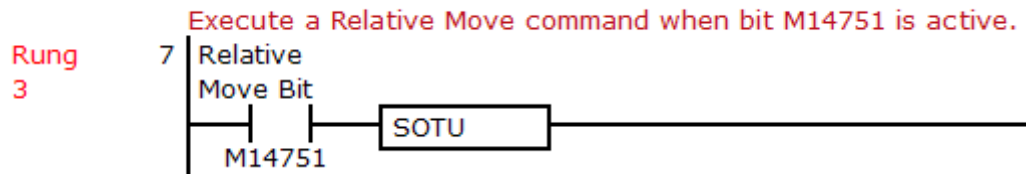
13. Once completed, your ladder program should look like this



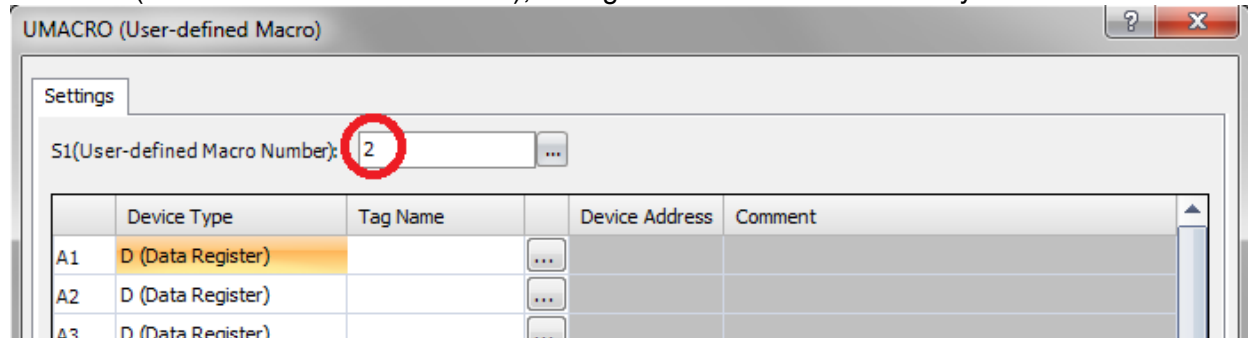
- Next, we need to clear the AMCI unit from configuration mode
- Insert the following instructions into your ladder program



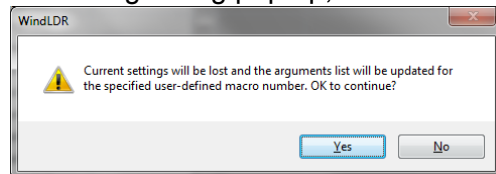
- Next, we need to insert the instruction to execute the Relative Move command
- Insert a NO contact M14751 (Relative Move Bit) and SOTU instructions as shown below



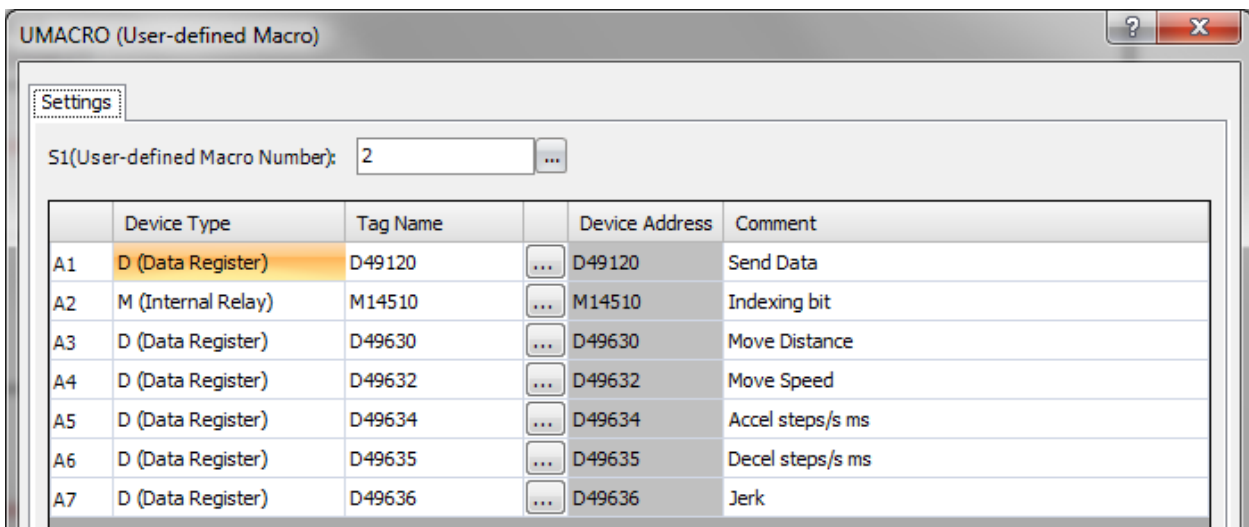
- Under **Home** tab, click **Macro** and select **UMACRO**
- Under S1 (User-defined Macro Number), change it to 2 and hit the **Tab** key



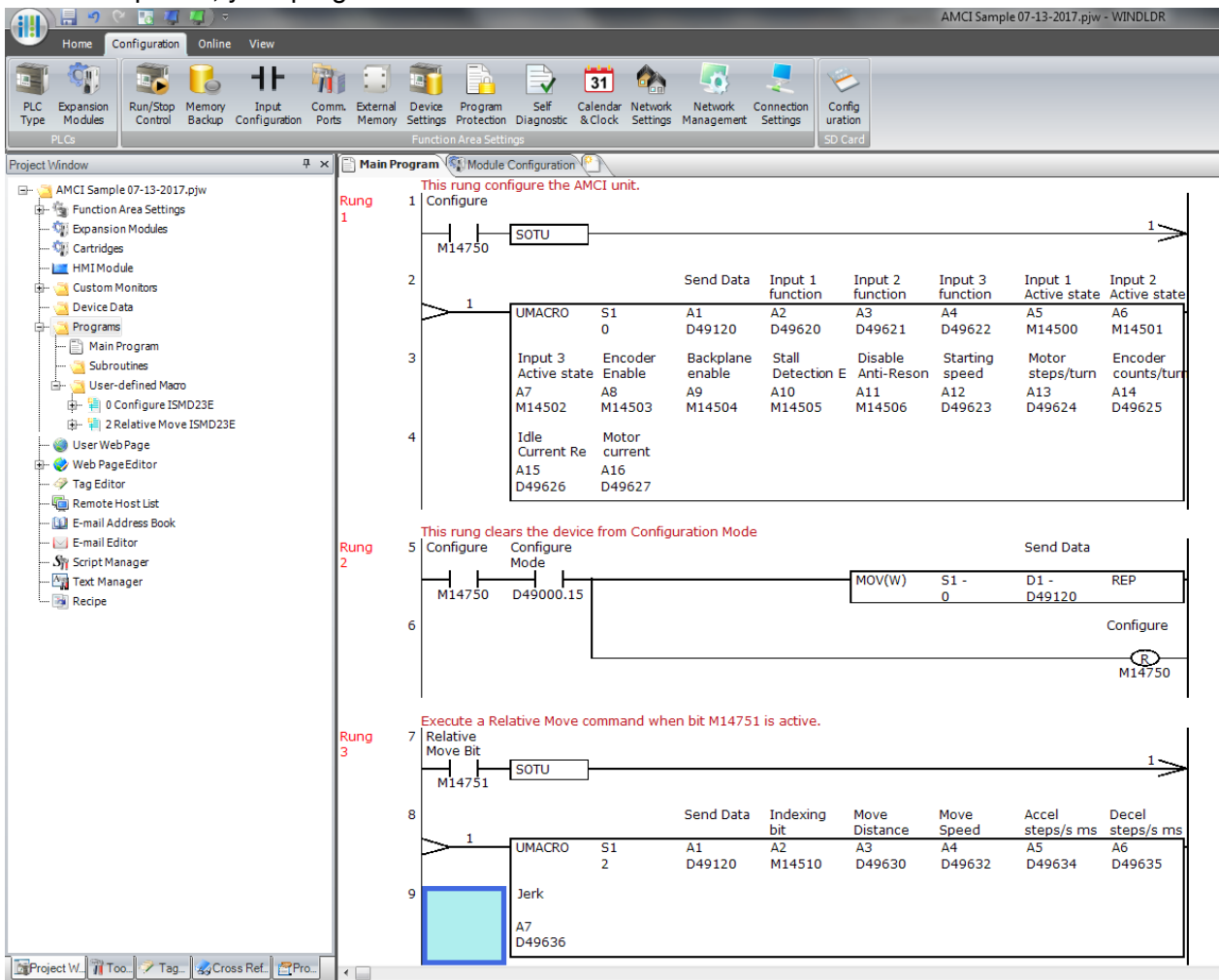
- A warning dialog pop up, click **Yes** to continue



- Fill out the parameters exactly as shown below

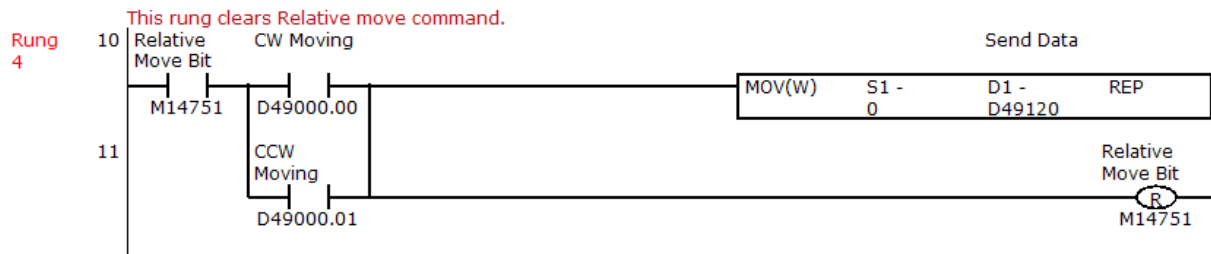


22. Once completed, your program should look like this

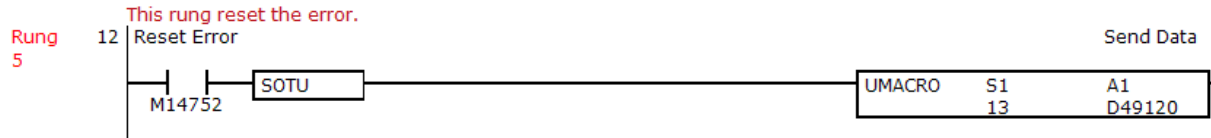


23. At this point, you're done with configuration and executing the Relative Move command. The next two steps are optional and can be useful if you need to clear the relative move command and reset error

24. To clear the Relative Move command, insert this ladder logic as shown below



25. To reset an error, insert this ladder logic as shown below



26. Download the ladder program into the FC6A PLC

27. In WindLDR Monitor mode, turn ON then OFF M14750 (Configure bit).

28. In WindLDR Monitor mode, double click on the UMACRO instruction to open the UMACRO dialog box and enter the values for distance D49630 and speed D49632.

	Tag Name	Device Address	Current Value	Preset Value	Comment
S1	10002	10002			
A1	D49120	D49120	0		Send Data
A2	M14510	M14510	0		Indexing bit
A3	D49630	D49630	5000		Move Distance
A4	D49632	D49632	500		Move Speed
A5	D49634	D49634	0		Accel steps/s ms
A6	D49635	D49635	0		Decel steps/s ms
A7	D49636	D49636	0		Jerk

29. Then turn ON M14751 (Relative Move Bit) to execute the relative move command.